



# BEHAVIORAL HEALTH AND RECOVERY SERVICES

**Mental Health Services Act  
Advisory Committee Meeting**  
Wednesday, January 25, 2023

# Agenda

Welcome and Introductions

BHRS Fiscal Year 2023-2024 Strategic Initiatives

Children System of Care Overview

Break

Supportive Services Division Overview

Prevention and Early Intervention Overview

Table Discussion and Feedback



# Welcome and Introductions

---

CARLOS CERVANTES, MHSA POLICY AND PLANNING MANAGER

KARA ANGUIANO, CHIEF FISCAL AND ADMINISTRATIVE OFFICER

TONY VARTAN, BEHAVIORAL HEALTH DIRECTOR

# Economic Outlook



Record Low Unemployment Rate



Record 40-Year High Inflation



Federal Reserve Raised Federal Funds Rate



Economic Growth Projected to Continue



Nonfarm Job and Total Wage Growth Expected to Slow



Risk of Mild Recession

2023-2024  
Governor's  
Budget  
Revenue  
Projections

---

State  
General  
Fund

**4.7% Decrease**

---

Personal  
Income  
Tax  
Collections

**2.7% Decrease**

---

Sales Tax  
and  
Vehicle  
License  
Fees

**1.6% Increase**

---

# Ongoing Strategic Initiatives

---



RECRUITMENT



CLINICAL TRAINING



PROGRAM AND STAFF  
DEVELOPMENT



WORKFORCE  
DEVELOPMENT



OUTPATIENT CAPACITY



RESIDENTIAL  
TREATMENT



CASELOADS



WAIT TIMES



HOUSING SUPPORT  
SERVICES



FUND BALANCE



AGING FACILITIES

CalAIM and  
Other  
Regulatory  
Initiatives

---

Electronic Health Record

---

Interoperability

---

Enhanced Care Management

---

Community Supports

---

Justice Involved

---

Care Coordination

---

Payment Reform

---

Other Regulatory Initiatives

# New Strategic Initiatives

---

CARE and  
Collaborative  
Court

Peer Support  
Certification

Eating Disorder  
Services

Mobile Crisis  
Response and  
988

Children's Crisis  
Continuum

Suicide  
Prevention  
Coalition

Substance Use  
Disorder Services  
Expansion

One Stop Shop  
for Supportive  
Services



# Children's System of Care/Transitional Age Youth

---

# Population Served

---

Medi-Cal Beneficiary

Children Ages: 0-17

Transitional Age Youth: 18-25

Children with Serious Emotional Disturbance (SED) and Transitional Age Youth with Serious Mental Illness (SMI)

# Mental Health Services

---

Mental Health Services:  
Individual, Group,  
Collateral and  
Rehabilitation— all ages

Crisis Intervention  
Services – all ages

Medication Support  
Services – all ages

Targeted Case  
Management Services:  
all ages

Therapeutic Behavioral  
Services – 0 to 21 years  
of age

# Children's System of Care/TAY

## Collaborative Partnerships

Education | CW | Probation | VMRC

## Community

Under/Unserviced Populations  
Promotores | Older Adults | Veterans |  
Cultural Collaboratives | FRC | CBO

## CERT

Crisis | Hospitalization

## Crisis & Support Line

## Children's Mobile Assessment Team

Hospital Liaison | FFPSA – Qualified Individual | Education Liaison | MHSSA

**Aspiranet**  
Crisis  
Stabilization  
Program &  
Intensive  
Community  
Support  
(High/Mid  
Intensity)

**Central Star**  
Behavioral  
Health  
Services  
Team  
(High  
Intensity)

**Children's  
Pathways to  
Wellbeing**  
(Child  
Welfare)  
(High  
Intensity)

**Sierra Vista**  
Behavioral  
Health  
Services  
Team (High  
Intensity)

**Telecare  
TAY**  
Behavioral  
Health  
Services  
Team  
(High  
Intensity)

**Children's  
Intensive  
Community  
Support**  
(Mid  
Intensity)

**Sierra Vista**  
Intensive  
Community  
Support  
(Mid  
Intensity)  
(High  
Intensity)

**Children's  
Early  
Intervention**  
(Mid Intensity)

**Center for  
Human  
Services**  
School  
Behavioral  
Health  
Integration  
(Mid  
Intensity)

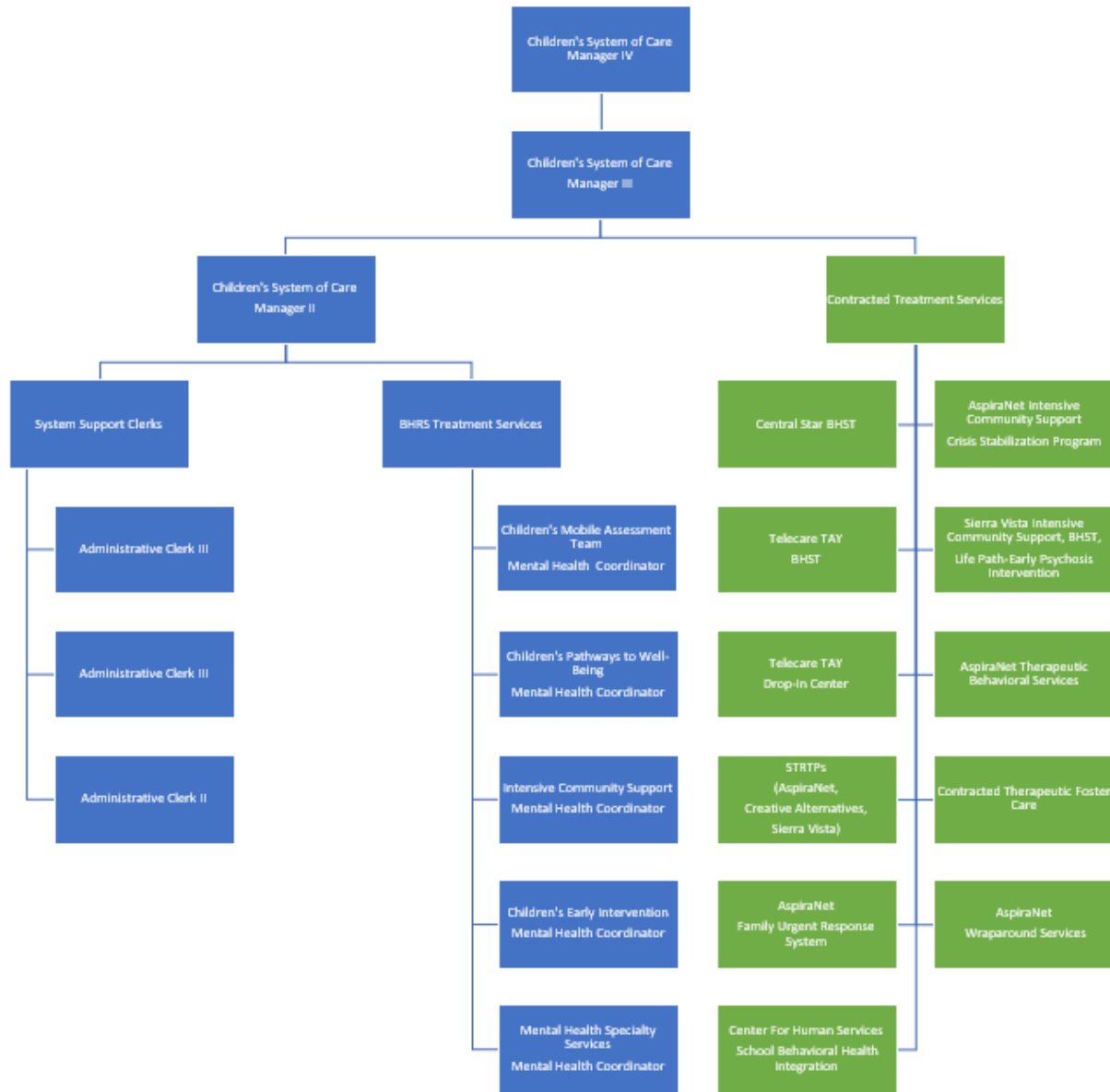
## Supportive Services Division

Peer & Family | Housing | Shelter | Employment

## Short-Term Residential Therapeutic Programs

## BHRS Mental Health Specialty Services

CAIRE | CFT | FEP | Education Liaison | MHSSA | RTC



# CSOC/TAY Outpatient Teams

# Children's Mobile Assessment Team

---



# Children's Mobile Assessment Team

---

Qualified  
Individual

Staff located at  
707 14<sup>th</sup> Street,  
Modesto Ca

**Hospital Liaison:**

**Presumptive  
Transfer Single  
Point of Contact:**

Staff located at  
707 14<sup>th</sup> Street,  
Modesto Ca

Children's Mobile Assessment Team



# Children's Early Intervention Team

---

Children's  
Early  
Intervention  
program

Located at  
920 16<sup>th</sup>  
Street,  
Modesto Ca

## Intensive Community Support Team

### Aspiranet Intensive Community Support

Located at 1620 Cummins Drive, Modesto Ca  
and 420 E. Canal Drive Turlock Ca

### BHRS Children's Intensive Community Support

Located at 421 E. Morris Avenue, Modesto Ca

### Sierra Vista Intensive Community Support

Located at 1700 McHenry Village Way,  
Modesto Ca

# Children's Pathways to Well-Being

---

Pathways to Well-Being



Co-located with Community  
Services Agency at 251 E. Hackett  
Road, Modesto Ca

# Mental Health Specialty Services

---

**Child Abuse  
Interview, Referrals  
and Evaluation  
(CAIRE) Center**

**Child and Family  
Team (CFT)**

**First Episode  
Psychosis (FEP)**

**Education Liaison**

**Mental Health  
Student Service Act**



**Assertive Community Treatment  
(ACT)**




**Intensive Community Supports (ICS)**


---

Behavioral  
Health  
Services  
Team Model

Telecare TAY: serve 18-25,  
located at 121 Downey Ave.,  
Modesto Ca



Central Star: serve 0-17,  
located at 1539 McHenry Ave.,  
Modesto Ca



Sierra Vista: serve 0-21, located  
at 1700 McHenry Village Way,  
Modesto Ca

Behavioral  
Health  
Service Team



# Other CSOC/TAY Services

Crisis Stabilization  
Program: located at  
1620 Cummins Drive,  
Modesto Ca

Therapeutic Behavioral  
Services: located at  
420 E. Canal Drive,  
Turlock Ca

Aspiranet



# Center for Human Services

## School Behavioral Health Integration

---

The School  
Behavioral Health  
Integration (SBHI)  
program

Located at various  
school sites and  
current CHS office  
locations

# Telecare TAY Drop-In Center



The Drop-In Center



Located at Youth Navigation Center  
at 2008 W. Briggsmore Avenue,  
Modesto Ca

Sierra Vista:  
Lasting  
Independence  
and Family  
Empowerment-  
LIFE Path

The LIFE Path Early  
Psychosis Intervention  
program

Located at 1700  
McHenry Village Way,  
Suite 14, Modesto Ca

# Aspiranet WrapAround (WRAP) Services



WrapAround Services



Located at 1620 Cummins Drive,  
Modesto Ca

# Short-Term Residential Therapeutic Programs (STRTPs)

---

Aspiranet

Creative  
Alternative

Sierra  
Vista



Aspiranet Family Urgent Response System (FURS)

# Therapeutic Foster Care (TFC)

---



THERAPEUTIC FOSTER CARE  
(TFC)



PLANNING PHASE OF  
DEVELOPMENT.

---

Questions ?





BREAK

---



# Supportive Services Division

The Supportive Services Division (SSD) areas includes; Behavioral Health Advocacy Services, Peer & Family Supports, Housing & Employment Supports, Behavioral Health Wellness Center, Consumer and Family Affairs

---

# Core Treatment Model

## Behavioral Health Services Team

<b>Population</b>	<b>Adults/Children with SMI/SED with functional impairment</b>									
<b>Performance Measure</b> <i>"Better Off"</i>	<b>Increase functioning / Decreased impairment</b> <i>As measured by the LOCUS/CANS/DCR/Perception Surveys</i>									
<b>Core Treatment Model</b> <i>Strategies to Increase Functioning &amp; Decrease Impairment</i>	<table border="1"> <thead> <tr> <th data-bbox="879 594 1373 644">Treatment Services</th> <th data-bbox="1388 594 1862 644">Providers</th> </tr> </thead> <tbody> <tr> <td data-bbox="879 652 1373 743"> <b>Medication Services</b>            Medication prescription, administration, and monitoring.         </td> <td data-bbox="1388 652 1862 743">           Psychiatrist            Registered Nurse            Other prescribers         </td> </tr> <tr> <td data-bbox="879 752 1373 943"> <b>MH Clinical Services</b> <ul style="list-style-type: none"> <li>• Assessment*</li> <li>• Crisis Prevention/Intervention</li> <li>• 1:1 &amp; Group Clinical Intervention</li> <li>• Psychosocial Rehabilitation</li> <li>• Care &amp; Services Coordination</li> </ul> </td> <td data-bbox="1388 752 1862 943">           Mental Health Clinicians*            Behavioral Health Specialist            Clinical Service Technicians         </td> </tr> <tr> <td data-bbox="879 952 1373 1090"> <b>Family, Peer and Community Support</b> </td> <td data-bbox="1388 952 1862 1090">           Behavioral Health Specialist Behavioral Health Advocate            Clinical Service Technician            Community Clerical Aid         </td> </tr> </tbody> </table>		Treatment Services	Providers	<b>Medication Services</b> Medication prescription, administration, and monitoring.	Psychiatrist Registered Nurse Other prescribers	<b>MH Clinical Services</b> <ul style="list-style-type: none"> <li>• Assessment*</li> <li>• Crisis Prevention/Intervention</li> <li>• 1:1 &amp; Group Clinical Intervention</li> <li>• Psychosocial Rehabilitation</li> <li>• Care &amp; Services Coordination</li> </ul>	Mental Health Clinicians* Behavioral Health Specialist Clinical Service Technicians	<b>Family, Peer and Community Support</b>	Behavioral Health Specialist Behavioral Health Advocate Clinical Service Technician Community Clerical Aid
	Treatment Services	Providers								
	<b>Medication Services</b> Medication prescription, administration, and monitoring.	Psychiatrist Registered Nurse Other prescribers								
	<b>MH Clinical Services</b> <ul style="list-style-type: none"> <li>• Assessment*</li> <li>• Crisis Prevention/Intervention</li> <li>• 1:1 &amp; Group Clinical Intervention</li> <li>• Psychosocial Rehabilitation</li> <li>• Care &amp; Services Coordination</li> </ul>	Mental Health Clinicians* Behavioral Health Specialist Clinical Service Technicians								
<b>Family, Peer and Community Support</b>	Behavioral Health Specialist Behavioral Health Advocate Clinical Service Technician Community Clerical Aid									
<b>Performance Measures</b> <i>"How well we provide services"</i>										
Client & Provider Engagement / Access to Services / Medi-Cal Key Indicators / Provider Clinical Skill / Appropriate Level of Care Placement & Interventions										

Adult BHST

Children's BHST

Supportive  
Services  
Integration-  
Adults and  
Children  
Systems of  
Care

# Adult Services

**BHOE**  
CARE | AOT | Homeless OE

**Community**  
Under/Unserviced Populations  
Promotores | Older Adults | Veterans |  
Cultural Collaboratives | FRC | CBO

**CERT**  
Crisis | Hospitalization

**Crisis & Support Line**

**Medi-Cal Access | Assessment Team**

Telecare BHST  
1  
Full Services  
Partnership  
(High Intensity)

Telecare BHST  
2  
Full Services  
Partnership  
(High Intensity)

Turning Point  
BHST 3  
Full Services  
Partnership  
(High Intensity)

Turning Point  
BHST 4  
Full Services  
Partnership  
(High Intensity)

Turlock  
BHST 5  
Full Services  
Partnership  
(High Intensity)

Community  
Care  
Partnership  
Team  
(High Intensity)

Integrated  
Community  
Services  
(Mild Intensity)

**Behavioral Health Wellness Center**  
Community Based Peer Support

**CERT**  
Community Emergency Response Team |  
Hospitalization

**Supportive Services Division**  
Peer & Family Support | Housing/Employment |  
Shelter | Patient's Rights & Family Advocacy

**Office of Public Guardian**  
Conservatorship Investigation | Care Coordination  
Team | Estate Management Office | IMD/ARF |  
State Hospital

# Children's/TAY Services

## Collaborative Partnerships

Education | CW | Probation | VMRC

## Community

Under/Unserviced Populations  
Promotores | Older Adults | Veterans |  
Cultural Collaboratives | FRC | CBO

## CERT

Crisis | Hospitalization

## Crisis & Support Line

## Medi-Cal Access | Assessment Team

Children's Pathways to Wellbeing  
(Child Welfare)  
(High Intensity)

Telecare TAY Behavioral Health Services Team  
(High Intensity)

Central Star Behavioral Health Services Team  
(High Intensity)

Aspiranet Crisis Stabilization Program & Intensive Community Support  
(High/Mid Intensity)

Children's Intensive Community Support  
(Mid Intensity)

Sierra Vista Intensive Community Support  
(Mid Intensity)

Children's Early Intervention  
(Mid Intensity)

Center for Human Services School Behavioral Health Integration  
(Mid Intensity)

## Supportive Services Division

Peer & Family Support | Housing/Employment | Shelter | Patient's Rights & Family Advocacy


## Short-Term Residential Therapeutic Programs

## BHRS Mental Health Specialty Services

Juvenile Hall | SBBHS | CAIRE | FEP | Hospital Liaison | PT SPOC

# Peer and Family Support Services

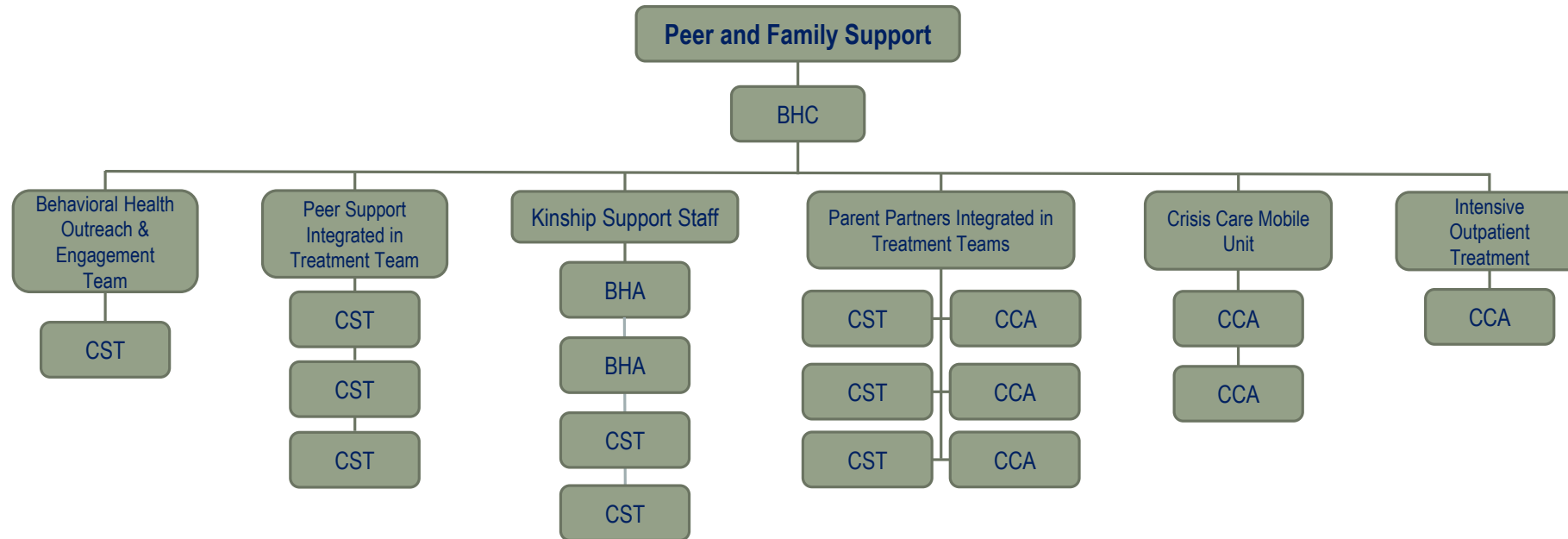
---



Peer Support

Parent  
Partners

Kinship  
Supportive  
Services



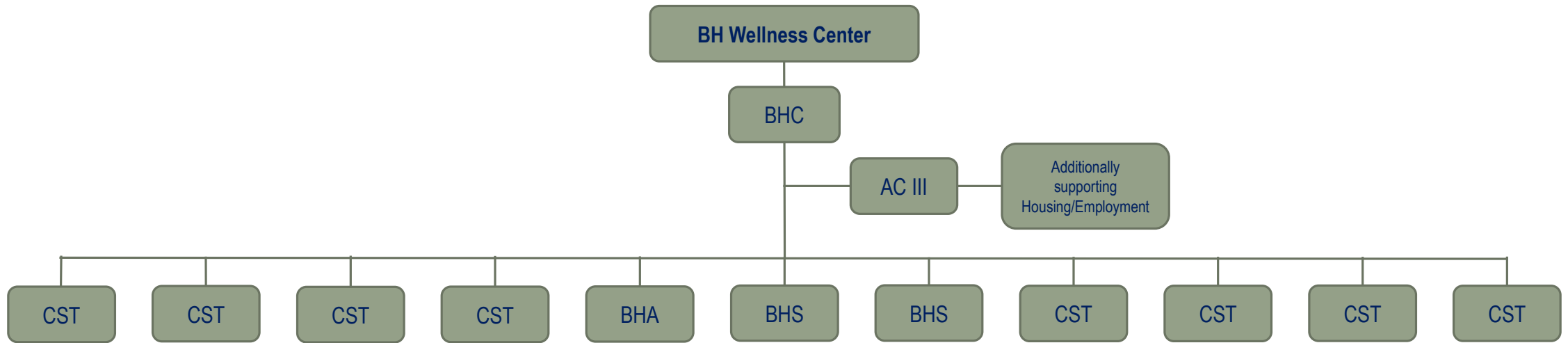


# Behavioral Health Wellness Center

---

The Behavioral  
Health Wellness  
Center (BHWC)

Monday-Friday  
9am-8pm and  
Saturdays 9am-  
5pm

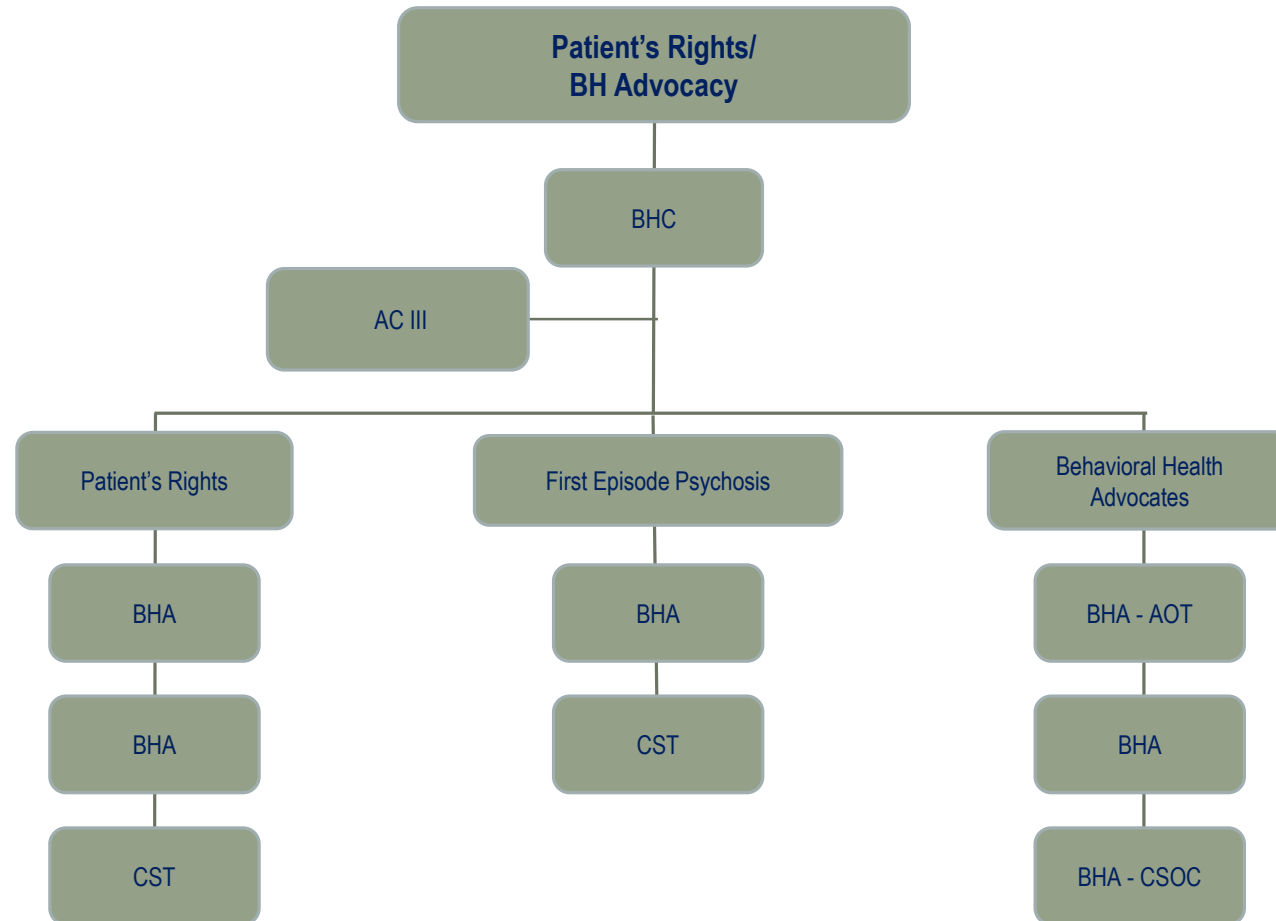


# Patient's Rights/Behavioral Health Advocacy Services

---

Patient's Rights

Family Advocacy





HOUSING SUPPORT  
SERVICES

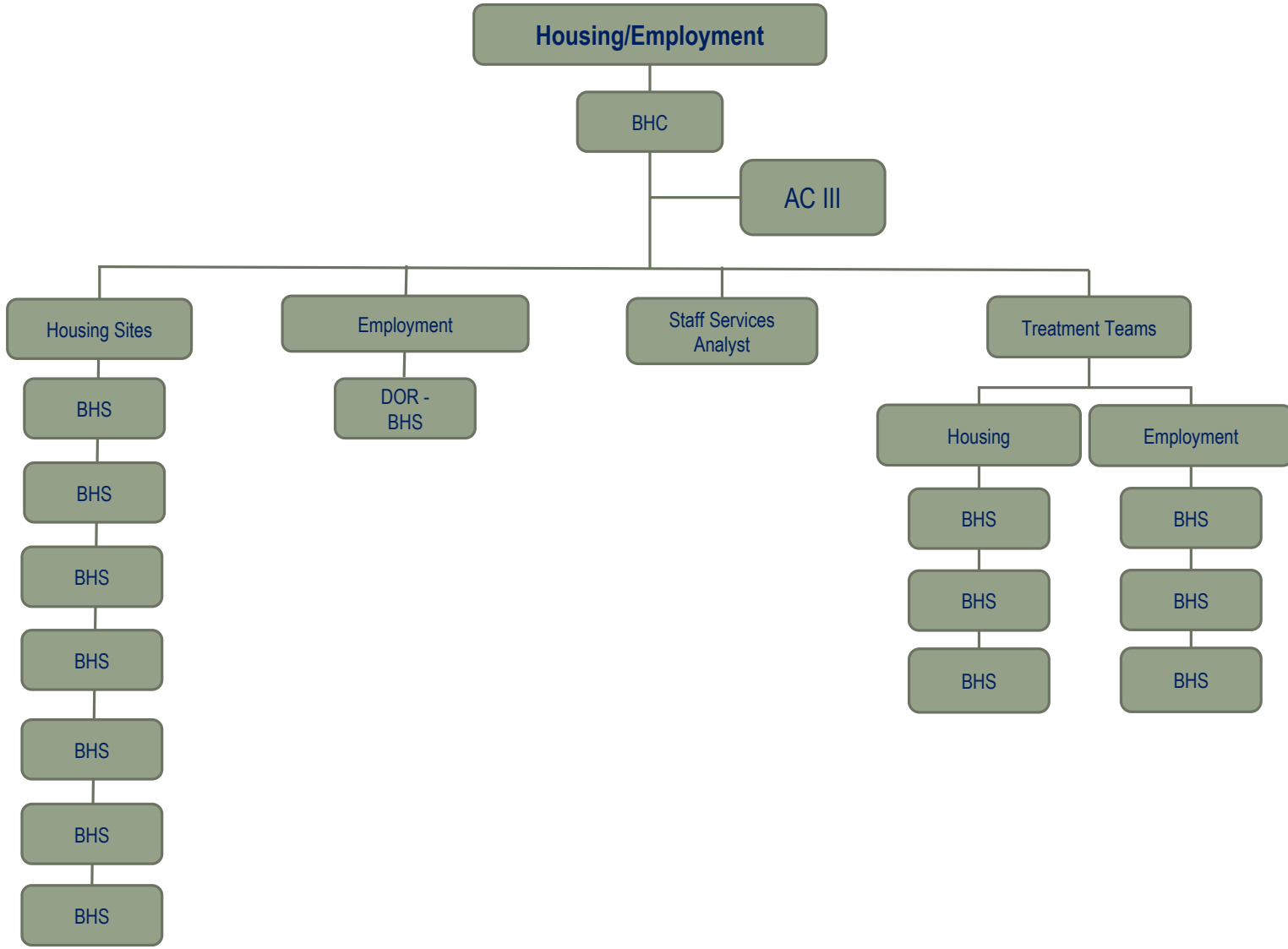


EMPLOYMENT  
SUPPORT SERVICES



EMERGENCY SHELTER  
ASSISTANCE





# Housing Development

---



Behavioral Health and  
Recovery Services (BHRS)



Stanislaus County  
Community Development  
Agencies



Private Sector



City of Modesto Community  
Development Agencies

---

# Questions ?



# Prevention Services Division

Janet Nuñez-Pineda, Ed.D

Stanislaus County Behavioral Health & Recovery Services



Behavioral Health and  
Recovery Services



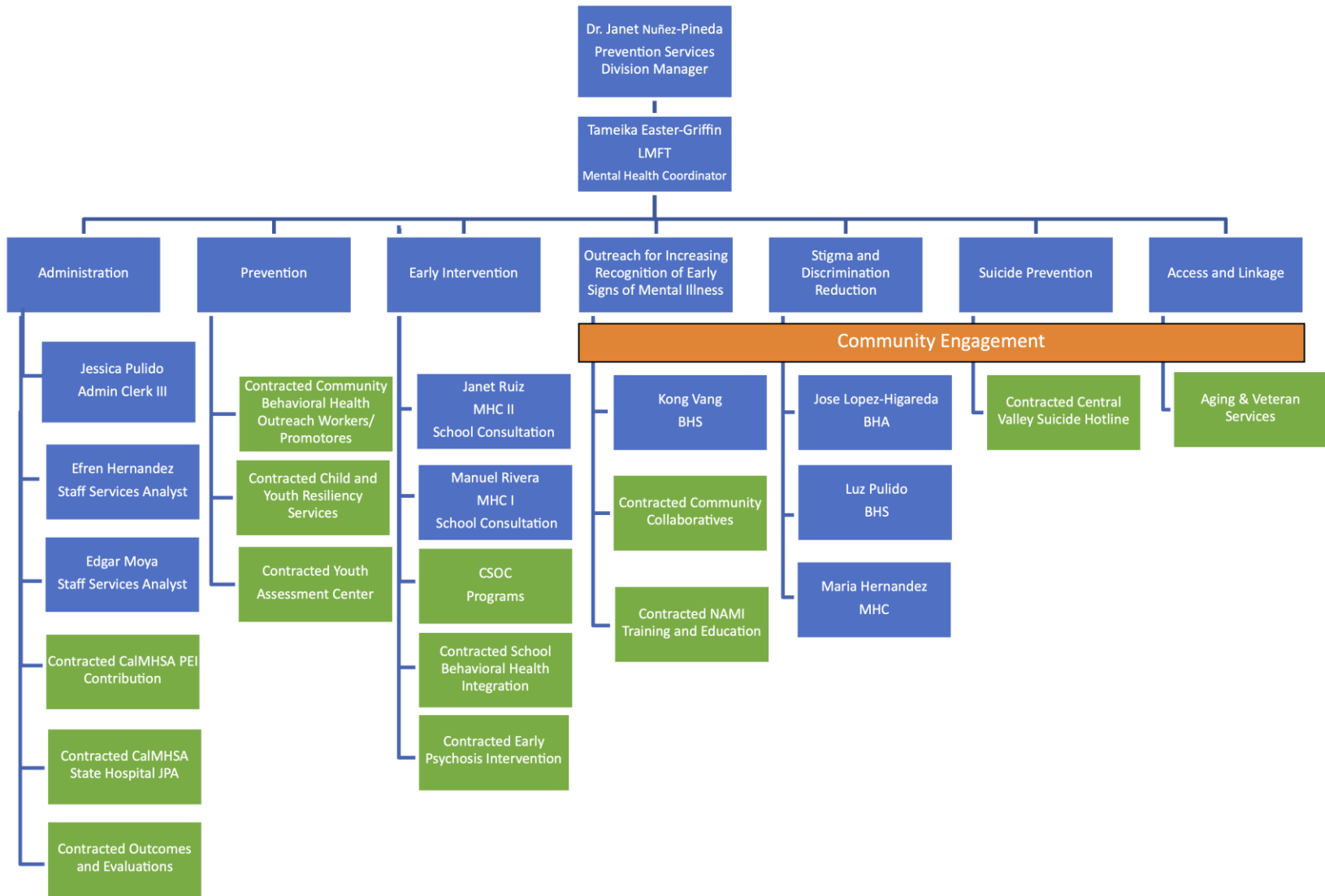
# | Prevention & Early Intervention..

20% of MHSA Allocation is utilized for PEI Programs

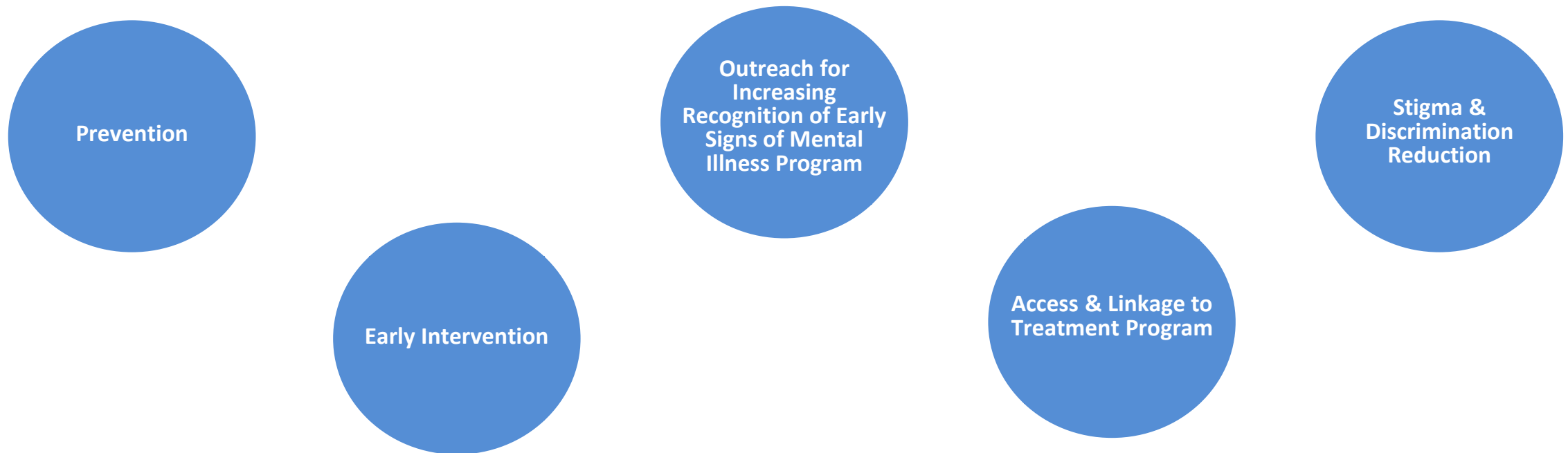


WELLNESS • RECOVERY • RESILIENCE





# Prevention & Early Intervention consists of 5 Components:



*\*Note 2015 Mental Health Services Act / Oversight & Accountability Commission Enacted  
PEI Regulations; Updated 2018*



# | Administration

- Managing Fiscal Reports/Data Collection
- MHSA OAC Deadlines
- Develop/Manage Request for Proposals
- Mental Health Services Act Administrative Tasks
- Annual Contract Monitoring & Renewals



# Prevention

- Contracted Community Behavioral Health Outreach Workers/ Promotores
- Child and Youth Resiliency Contract
- Contracted Youth Assessment Center

*\*Note Related activities to reduce risk factors for developing a potentially serious mental illness and to build protective factors*



# | Early Intervention

- School Based Services (School Consultation)
- Children System of Care / Early Intervention
- Contracted Brief Intervention Counseling
- Contracted Early Psychosis Intervention / Life Path



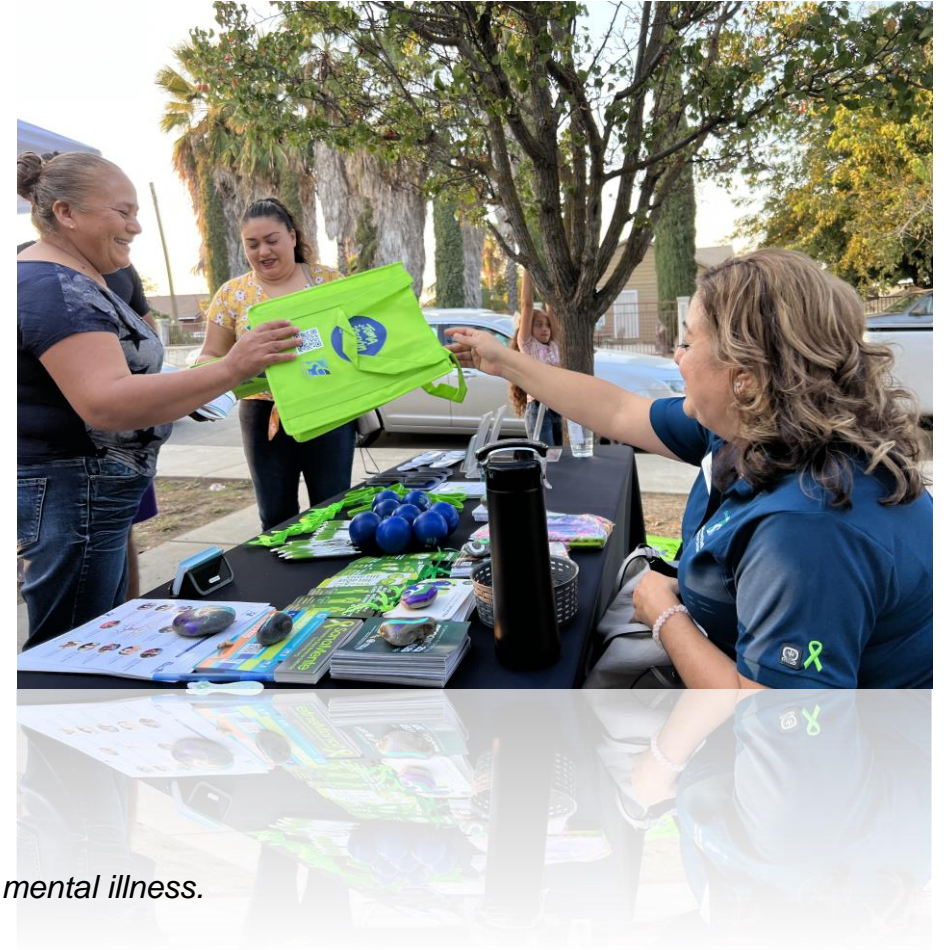
*\*Note treatment and other services and interventions, including relapse prevention, to address and promote recovery and related functional outcomes for a mental illness early in its emergence. Early Intervention services typically shall not exceed 6-18 months.*





# | Suicide Prevention

- **Goals**
  - Increase Awareness & Access
  - Access Treatment
  - Suicide Prevention
- **Strategies**
  - Stigma Reduction
  - Access to Services
  - Suicide Prevention & Awareness Training



*\*Note organized activities that the County undertakes to prevent suicide as a consequence of mental illness.*





# | Access & Linkage

- Strengthening the capacity of communities and strategic partners to provide access and linkage services to mental health treatment and community support.
- Peer & community support development training, education and technical assistance.
- Direct support services to facilitate and support access and linkage to treatment.

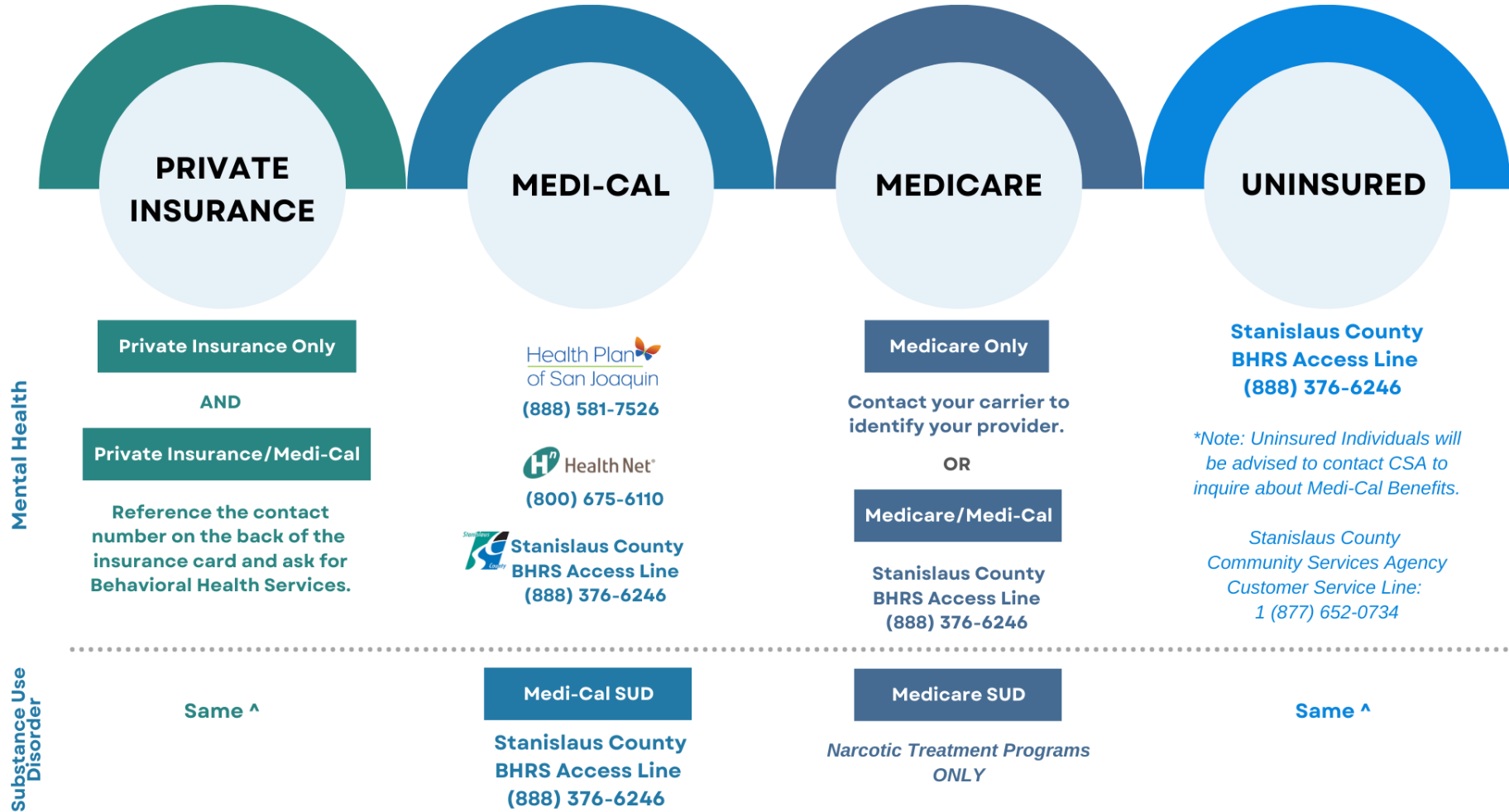


*\*Note Improving Timely Access to Services for Underserved Populations. Example Connecting individuals experiencing mental illness as early in its emergence.*



# ACCESSING BEHAVIORAL HEALTH IN STANISLAUS COUNTY

## MENTAL HEALTH & SUBSTANCE USE DISORDER TREATMENT SERVICES



**Emergency Services: Call 911 or Go to Nearest Emergency Department**

## Outreach for Increasing Recognition of Early Signs of Mental Illness



**CAMPAIGN**

- Access to Treatment
- Suicide & Crisis Lifeline



**Education & Training**

- Access to Treatment Training
- Suicide Awareness & Prevention
- Wellness



**Outreach & Engagement**

- Promotores CBHOW
- Community Outreach

*\*Note engaging, encouraging, educating, and/or training, and learning.*





# Stigma & Discrimination Reduction

*Increase Awareness / Strategies:*

## Social Media Presence



@stancounty



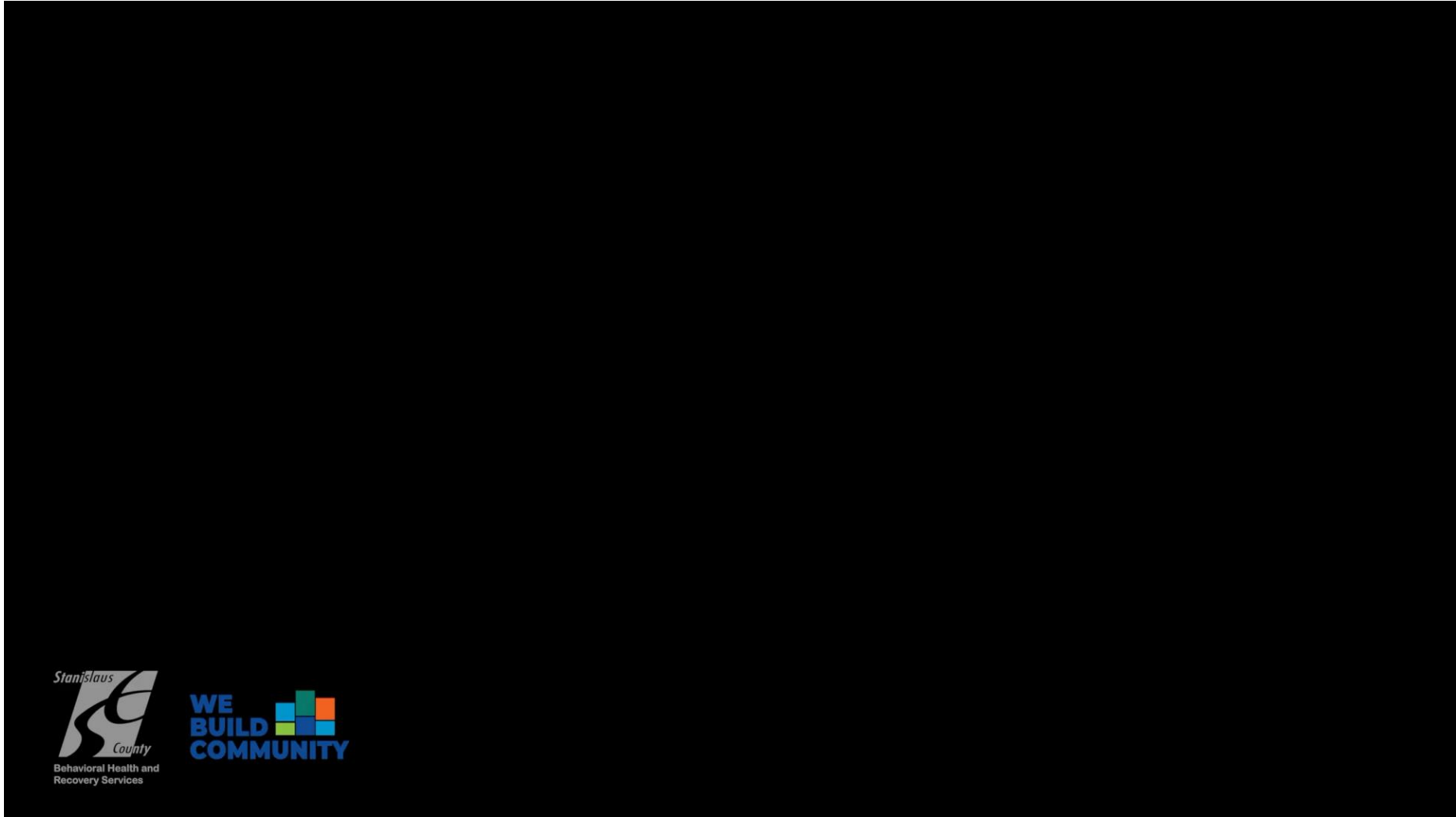
## Movie Theatre Services Ads / Radio Commercials



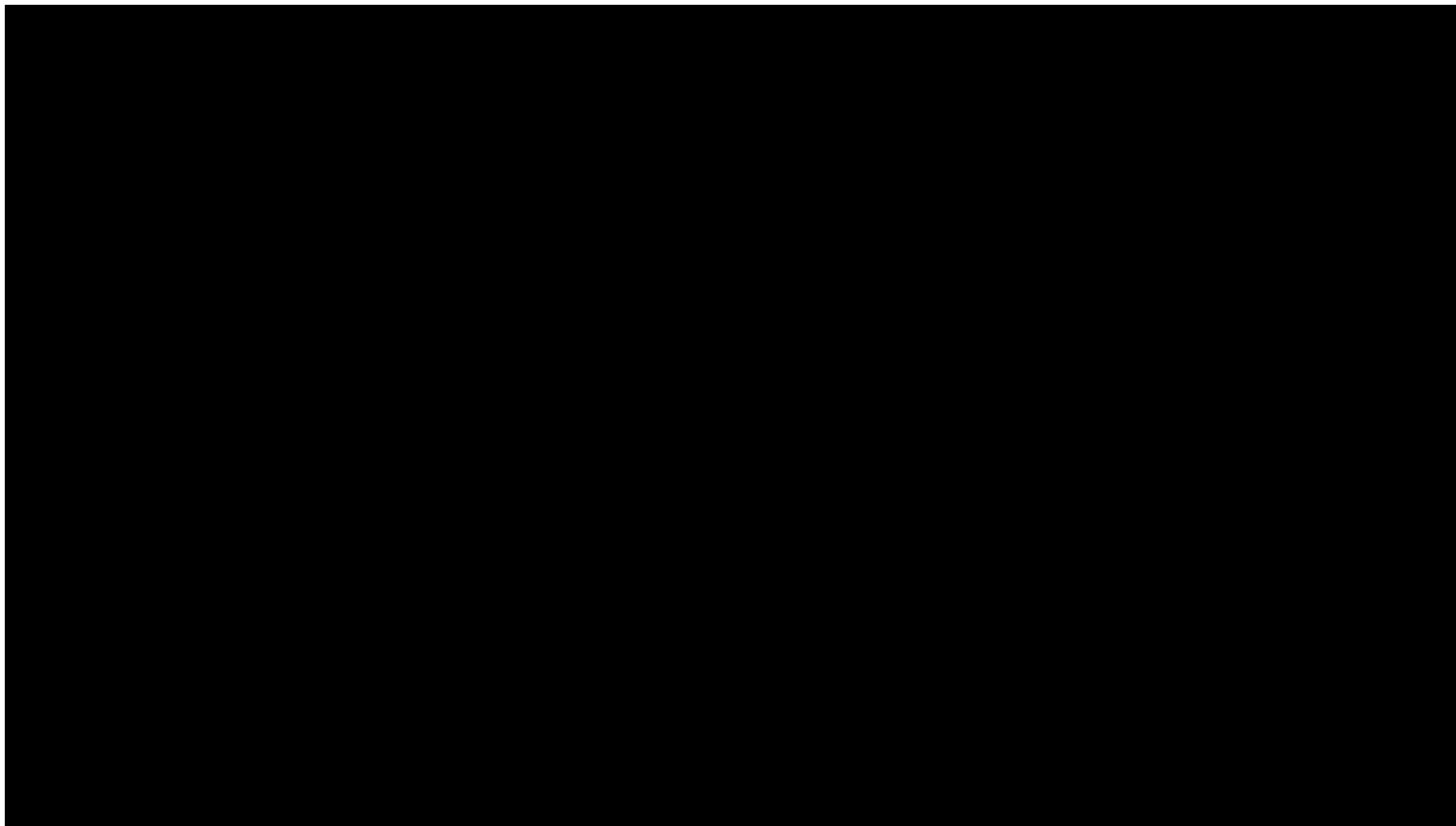
*\*Note direct activities to reduce negative feelings, attitudes, beliefs, perceptions, stereotypes and/or discrimination related to being diagnosed with a mental illness*



Stanislaus County BHRS  
Access, Crisis, and Support Line Commercial Ad



## National Suicide & Crisis Lifeline 988 Commercial Ad



# Thank You



## Contact Us

Prevention Services Division  
4640 Spyres Way Building B-  
Suite 7  
Modesto, CA 95356  
**(209) 525-5315**



[www.stanbhrrsprevention.com](http://www.stanbhrrsprevention.com)



# Table Discussion and Feedback



# Thank you for joining us today!

---

CARLOS CERVANTES, MHSA POLICY AND PLANNING MANAGER  
(209) 525-6225 OR [BMHSA@STANBHRS.ORG](mailto:BMHSA@STANBHRS.ORG)