



---

# BEHAVIORAL HEALTH & RECOVERY SERVICES

---

## **Mental Health Services Act**

Representative Stakeholder Steering Committee Meeting

February 23, 2022

A solid dark blue horizontal bar at the bottom of the page.

# Agenda

Welcome and Introductions

FY 2020-2021 RER

FY 2021-2022 Plan Update for Innovations CPP

CaAIM Overview

Strategic Initiatives

Discussion

Looking Ahead – Next Steps

Questions

# Fiscal Year 2020-2021 Revenue and Expenditure Report (RER)

---

# Revenue and Expenditure Report (RER)

---

What is the  
RER?

Why does it  
have to be  
done?

Where can it  
be found?

# Funding for Innovations Community Planning Process and Stakeholder Input

---

# FY 2021-2022 Plan Update Focus

---



Innovations funding available and no projects in the works

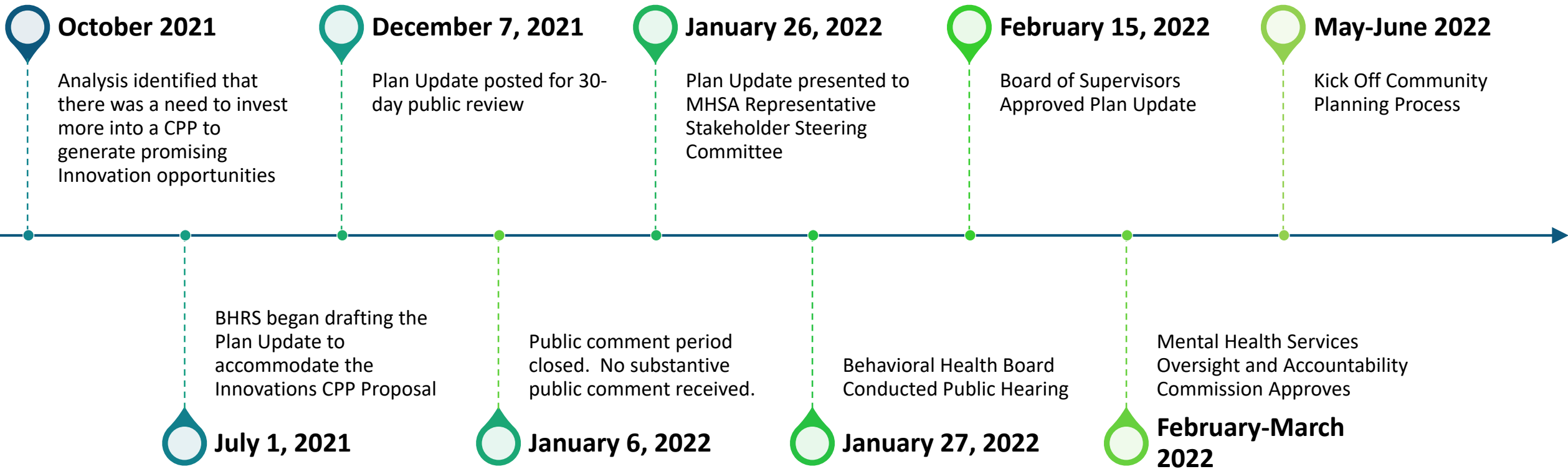


Opportunity to invest in a community planning process to inform MHSA and the BHRS Strategic Plan



Ensure active and ongoing engagement across diverse community stakeholders

# FY 2021-2022 Plan Update Funding for Innovations Community Planning Process

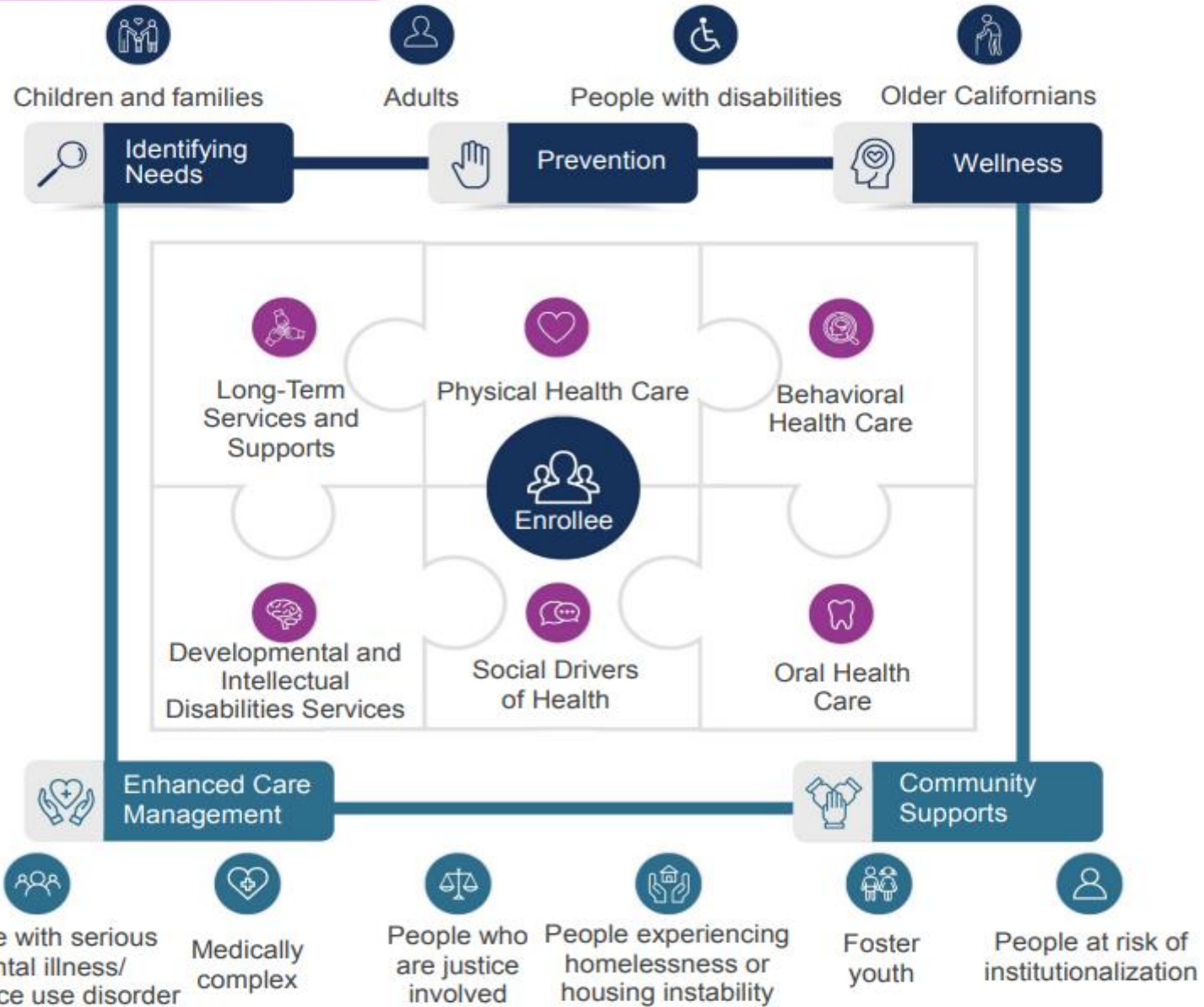


# California Advancing and Innovating Medi-Cal (CalAIM) Overview

---



# Population Health Management



## CalAIM Goals

Whole person care approach

Improve quality outcomes

Reduce health disparities

Transform the delivery system

Make services easier to navigate

01

Improve Access/  
Reduce Barriers

- No Wrong Door
- Integrate mental health and substance use disorder services

02

Improve Quality

- Payment Reform
- Contingency Management

03

Improve Care  
Coordination

- Foster care reforms

# Behavioral Health Initiatives

# Behavioral Health Initiatives Timeline

Policy	Go-Live Date
Changes to Eligibility Criteria for SMHS	January 2022
DMC-ODS 2022-2026	January 2022
Documentation Redesign for SUD & SMHS	July 2022
Co-Occurring Treatment	July 2022
No Wrong Door	July 2022
Standard Screening & Transition Tools	January 2023
Payment Reform Phase 1	July 2023

# CalAIM Implementation Plan

---



GOAL 1 PAYMENT REFORM



GOAL 2 IMPLEMENTATION OF  
CALAIM BEHAVIORAL HEALTH  
POLICY CHANGES



GOAL 3 DATA EXCHANGE

# CalAIM Behavioral Health Key Milestones

---

Appointed  
Implementation  
Manager

DHCS Guidance  
Under Review

Formed  
Workgroup

Completed Cost  
Survey for  
Payment Reform

Submitted  
Implementation  
Plan

# CalAIM Behavioral Health Next Steps

---

Review Additional  
Guidance as  
Released

Update Policies  
and Procedures

Develop EHR

Provide Training

Develop Data  
Sharing

Migrate to new  
EHR

Pilot  
Implementation

# Broader CalAIM Initiatives

---

Enhanced Care  
Management for  
highest-need through  
intensive coordination

Community Supports  
("In Lieu of Services")  
designed to address  
social drivers of health

Improve the health of  
Justice-Involved  
Individuals



# Broader CalAIM Initiatives - Populations of Focus

---

People with serious mental illness/substance use disorder

People experiencing homelessness or housing instability

Foster youth

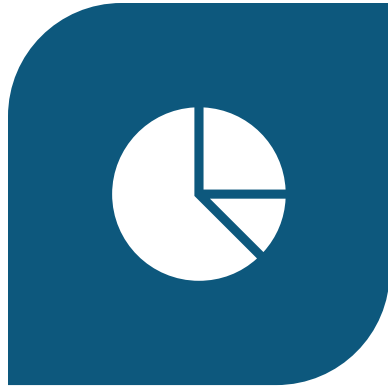
People at risk of institutionalization

Medically complex

People who are justice involved

# Enhanced Care Management (ECM)

---



5% OF ENROLLEES = 50% OF  
TOTAL MEDI-CAL SPENDING



COMPLEX HEALTH CONDITIONS  
INVOLVING PHYSICAL,  
BEHAVIORAL, AND SOCIAL NEEDS



MULTIPLE DELIVERY SYSTEMS TO  
ACCESS CARE

# Community Supports (“In Lieu of Services” ILOS)

---



COMPLEX HEALTH + UNMET NEEDS  
= HIGH RISK OF HOSPITALIZATION  
OR INSTITUTIONALIZATION



HOMELESS EXPERIENCE LONGER  
HOSPITAL STAYS AND HIGHER  
READMISSION RATES



20% OF CALIFORNIA FOOD  
INSECURE



65% OF MEDI-CAL REPRESENT  
COMMUNITIES OF COLOR

# Justice-Involved Adults and Youth

---



63% INCREASE IN MENTAL  
HEALTH CARE IN JAILS



66% INMATES NEED SUD  
TREATMENT



OVERDOSE RATES 100X  
HIGHER



RACIAL DISPARITIES

# Broader CalAIM Initiatives – Partnership Development

---

## County Departments

- Behavioral Health and Recovery Services
- Health Services Agency
- Community Services Agency
- Sheriff
- Probation

## Managed Care Plans

- Health Plan of San Joaquin
- Health Net

## Medi-Cal and Other Service Providers

- Hospitals
- Clinics
- Community Based Organizations

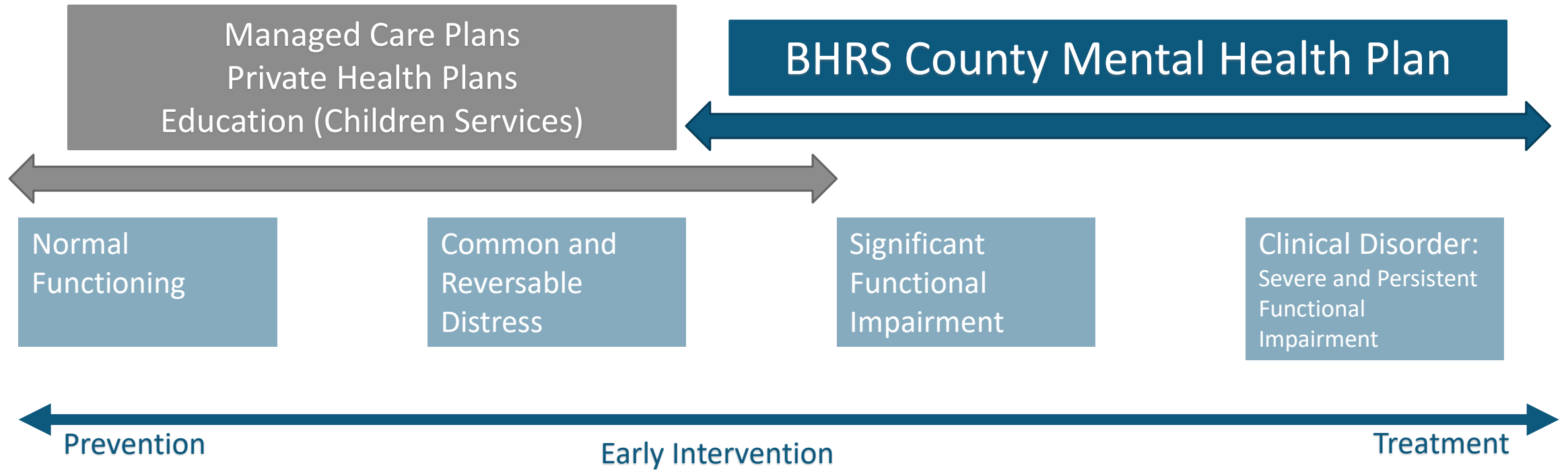
# Strategic Initiatives

---

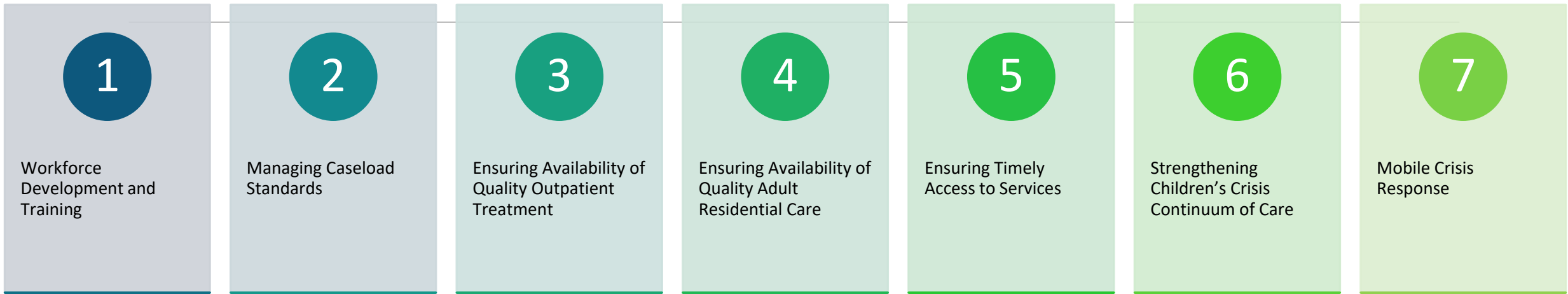
# Core Treatment Model

<p><b>Population</b></p>	<p><b>Adults/Children with SMI/SED with functional impairment</b></p>												
<p><b>Performance Measure</b> <i>“Better Off”</i></p>	<p><b>Increase functioning / Decreased impairment</b> <i>As measured by the LOCUS/CANS/DCR/Perception Surveys</i></p>												
<p><b>Core Treatment Model</b> <i>Strategies to Increase Functioning &amp; Decrease Impairment</i></p>	<table border="1"> <thead> <tr> <th data-bbox="570 472 1258 529">Treatment Services</th> <th data-bbox="1271 472 1768 529">Providers</th> <th data-bbox="1781 472 2372 529">Clinical Standards</th> </tr> </thead> <tbody> <tr> <td data-bbox="570 536 1258 679"> <p><b>Medication Services</b> Medication prescription, administration, and monitoring.</p> </td> <td data-bbox="1271 536 1768 679"> <p>Psychiatrist Registered Nurse Other prescribers</p> </td> <td data-bbox="1781 536 2372 1186" rowspan="3"> <ul style="list-style-type: none"> <li>• Evidence Based Practice</li> <li>• Cultural Competency</li> <li>• Network Adequacy Standards</li> <li>• Provider Clinical Skill &amp; Knowledge</li> </ul> </td> </tr> <tr> <td data-bbox="570 686 1258 979"> <p><b>Mental Health Clinical Services</b></p> <ul style="list-style-type: none"> <li>• Assessment*</li> <li>• Crisis Prevention/Intervention</li> <li>• 1:1 &amp; Group Clinical Intervention</li> <li>• <i>Psychosocial Rehabilitation</i></li> <li>• Care &amp; Services Coordination</li> </ul> </td> <td data-bbox="1271 686 1768 979"> <p>Mental Health Clinicians* Behavioral Health Specialist Clinical Service Technicians</p> </td> </tr> <tr> <td data-bbox="570 986 1258 1186"> <p><b>Family, Peer and Community Support</b></p> </td> <td data-bbox="1271 986 1768 1186"> <p>Behavioral Health Specialist Behavioral Health Advocate Clinical Service Technician Community Clerical Aid</p> </td> </tr> </tbody> </table>			Treatment Services	Providers	Clinical Standards	<p><b>Medication Services</b> Medication prescription, administration, and monitoring.</p>	<p>Psychiatrist Registered Nurse Other prescribers</p>	<ul style="list-style-type: none"> <li>• Evidence Based Practice</li> <li>• Cultural Competency</li> <li>• Network Adequacy Standards</li> <li>• Provider Clinical Skill &amp; Knowledge</li> </ul>	<p><b>Mental Health Clinical Services</b></p> <ul style="list-style-type: none"> <li>• Assessment*</li> <li>• Crisis Prevention/Intervention</li> <li>• 1:1 &amp; Group Clinical Intervention</li> <li>• <i>Psychosocial Rehabilitation</i></li> <li>• Care &amp; Services Coordination</li> </ul>	<p>Mental Health Clinicians* Behavioral Health Specialist Clinical Service Technicians</p>	<p><b>Family, Peer and Community Support</b></p>	<p>Behavioral Health Specialist Behavioral Health Advocate Clinical Service Technician Community Clerical Aid</p>
Treatment Services	Providers	Clinical Standards											
<p><b>Medication Services</b> Medication prescription, administration, and monitoring.</p>	<p>Psychiatrist Registered Nurse Other prescribers</p>	<ul style="list-style-type: none"> <li>• Evidence Based Practice</li> <li>• Cultural Competency</li> <li>• Network Adequacy Standards</li> <li>• Provider Clinical Skill &amp; Knowledge</li> </ul>											
<p><b>Mental Health Clinical Services</b></p> <ul style="list-style-type: none"> <li>• Assessment*</li> <li>• Crisis Prevention/Intervention</li> <li>• 1:1 &amp; Group Clinical Intervention</li> <li>• <i>Psychosocial Rehabilitation</i></li> <li>• Care &amp; Services Coordination</li> </ul>	<p>Mental Health Clinicians* Behavioral Health Specialist Clinical Service Technicians</p>												
<p><b>Family, Peer and Community Support</b></p>	<p>Behavioral Health Specialist Behavioral Health Advocate Clinical Service Technician Community Clerical Aid</p>												
<p><b>Performance Measures</b> <i>“How well we provide services”</i></p>	<p>Client &amp; Provider Engagement / Access to Services / Medi-Cal Key Indicators / Provider Clinical Skill / Appropriate Level of Care Placement &amp; Interventions</p>												

# Mental Health Continuum of Care







# Core Treatment Model Capacity Building



# Community Stakeholders Engagement

## Collaborative Planning

- Medi-Cal Managed Care Mental Health
- School-based mental health
- Criminal Justice/Public Safety
- Healthcare
- Private/Commercial Health plans

Improve Access?



Priority Populations?

Where?

When?

Collaborative Partners?

Strengthen treatment capabilities?

Mental Health Treatment RBA Framework (DRAFT)

<b>Population</b>	Adults with Severe Mental Illness with functional impairment Children with Severe Emotional Disturbance with functional impairment	
<b>Performance Measure</b> "Better Off"	Increase functioning / Decreased impairment As measured by the LOCUS/CANS/DCR/Perception Surveys	
<b>Core Treatment Model</b> Strategies to Increase Functioning & Decrease Impairment	<b>Treatment Services</b>	<b>Providers</b>
	<b>Medication Services</b> Medication prescription, administration, and monitoring.	Psychiatrist Registered Nurse Other prescribers
	<b>Clinical Services</b> <ul style="list-style-type: none"> <li>• Assessment*</li> <li>• Crisis Prevention/Intervention</li> <li>• 1:1 &amp; Group Supportive Therapy</li> <li>• Psychosocial Rehabilitation</li> <li>• Care &amp; Services Coordination</li> </ul>	Mental Health Clinicians* Behavioral Health Specialist Clinical Service Technicians
	<b>Family, Peer and Community Support</b>	Behavioral Health Specialist Behavioral Health Advocate Clinical Service Technicians Community Clerical Aid Community Partners
<b>Performance Measures</b> "How well we provide services"	Client & Provider Engagement / Access to Services / Medi-Cal Key Indicators / Provider Clinical Skill / Appropriate Level of Care Placement & Interventions	

Partners that have a role in the treatment of SMI/SED?

Support clients and families through treatment?



# Building Administrative Infrastructure

---

CalAIM Regulatory  
Changes

CalAIM  
Documentation  
Redesign

CalAIM New  
Electronic Health  
Record  
Implementation

CalAIM Payment  
Reform

Training and  
Learning

Performance  
Outcomes

Aging Facilities and  
ADA Requirements

Technology Needs

# Discussion

---

- What did you hear?
- What did you like?
- Other reactions/comments?

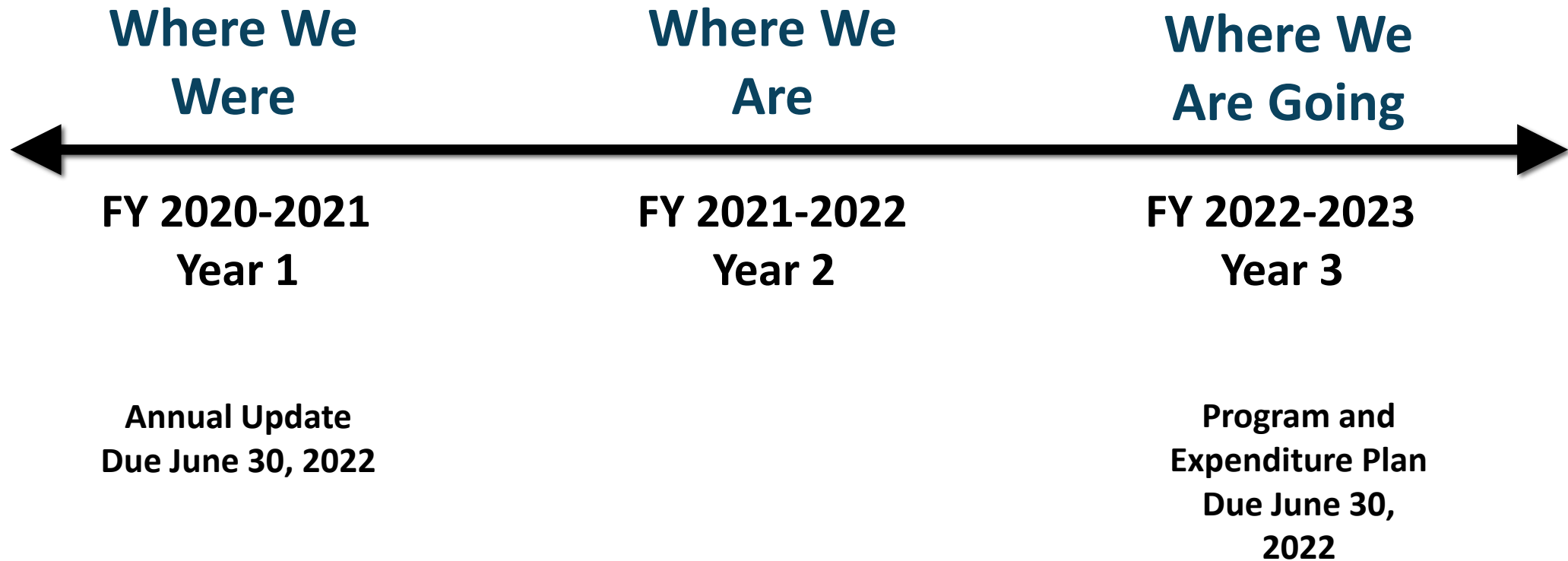
# Looking Ahead

---

- What's Coming Up For MHSA?

# MHSA FY 2020-2023 Program Cycle

---



# MHSA Annual Update for FY 2020-2021 (Looking Back)

---

- Reflects data for FY 2020-2021
- Completes Year 1 of the 2020-2023 Program Cycle

## ***What's next?***

- *Teams are collecting, reviewing and synthesizing program data for reporting*
- *RSSC Meeting (April 20, 2022)*
- *Board of Supervisors (Tentatively May 2022)*
- *Annual Update Due: June 30, 2022*



# Prevention and Early Intervention 3-Year Evaluation Report (Looking Back)

---

- Reflects data for FY 2018-2019, 2019-2020, and 2020-2021
- Evaluation of PEI outcomes to inform program planning and enhance program delivery

## ***What's Next?***

- *Teams are finalizing PEI Report*
- *RSSC Meeting (April 20, 2022)*
- *Board of Supervisors (Tentatively May 2022)*
- *PEI Report Due: June 30, 2022*

# MHSA Expenditure Plan for FY 2022-2023 (Looking Ahead)

---

Update to spending plan based on expenditure/revenue trends and further implementation of the Strategic Plan

## ***What's next?***

- *Internal Planning Teams reviewing/developing program plans, and budgets (October – March 2022)*
- *RSSC Meeting (April 20, 2022)*
- *Board of Supervisors (Tentatively May 2022)*
- *Plan Update Due: June 30, 2022*

# Future Stakeholder Engagement Opportunities

---

- April 20, 2022 (1 p.m. – 4 p.m.)
  - Annual Update for FY 2020-2021
  - PEI 3-Year Evaluation Report for FY 2018-2019, 2019-2020, and 2020-2021
  - 3-Year Program and Expenditure Plan Update for FY 2022-2023
- May/June (tentative)
  - Innovations Community Planning Process
- September/October 2022 (tentative)
  - Stakeholder Training

# Future Stakeholder Training Opportunities

---

May 2022 (tentative)

- New Stakeholder Training

September/October 2022 (tentative)

- Overview of Programs and Services
- BHRS and Contract Partner Leadership
- Update on California's Advancing and Innovating Medi-Cal (CalAIM)

# Questions?

---

**Carlos Cervantes**

MHSA Policy and Planning Manager

(209) 525-6225

[BMHSA@stanbhrs.org](mailto:BMHSA@stanbhrs.org)